



# CFPS-1-M

## CHEM-FEED® Plastic Single Skid System

### Features

- > Chemically resistant polyethylene structure
- > Leak free, threadless connections
- > Pressure Relief Valve protects the system from over-pressurization
- > Check Valve protects the user from back-flow
- > Flow Indicator provides a visual indication of chemical movement

Video link: 

### Highlights

**Piping**

PVC Schedule 80  
(optional CPVC, PVDF, and  
Chem Proline® PE)

**Pressure**

150 PSI  
(10.3 bar)

**Compatibility**

M1, M2, M3, M4,  
MD1, MC2, MC3, MD3

**Frame material**

Polyethylene

**Mounting position**

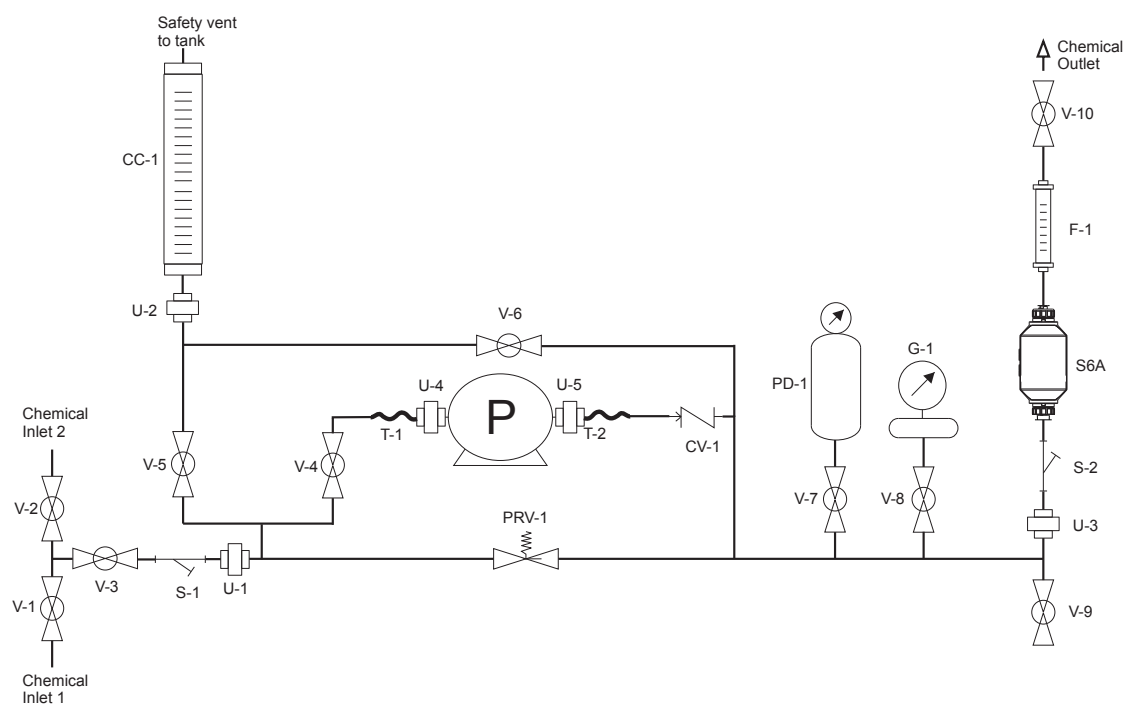
Floor or wall

**Warranty**

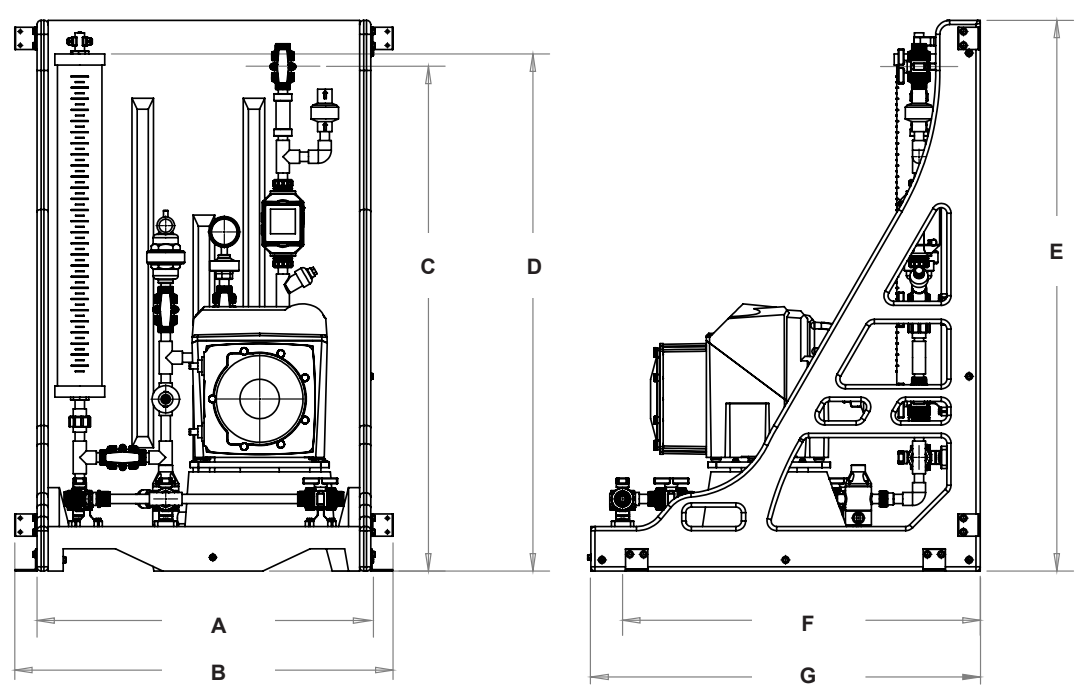
2 Years



|  |   |
|--|---|
| <b>Skid</b>                            | Chemically resistant polyethylene structure   |
| <b>Pump (sold separately)</b>          | FLEXFLO® M1, M2, M3 or M4 peristaltic pumps<br>CHEM-FEED® MD1, MC2, MC3 or MD3 diaphragm pumps  |
| <b>Piping</b>                          | 1/2" PVC Schedule 80 (optional CPVC, PVDF, Chem Proline®)   |
| <b>Seals</b>                           | FKM seals (optional EPDM)   |
| <b>Tubing (T)</b>                      | Reinforced braided PVC, 200 psi max, certified NSF 51 / NSF 61.<br>The pump inlet and outlet flexible tubing connections are terminated to half unions and secured to the barbed fitting with stainless steel clamps. (Optional: 1/2" PTFE, 1/4" PE, 1/4" PTFE) |
| <b>Tubing Clamps</b>                   | 300 series SS band, 400 series SS screw   |
| <b>Unions (U)</b>                      | PVC body, schedule 80 (optional CPVC, PVDF)   |
| <b>Ball Valves (V)</b>                 | True unions, PVC body, PTFE shaft bearings and seats (optional CPVC, PVDF)  |
| <b>Pressure Relief Valve (PRV)</b>     | PVC body, PTFE primary diaphragm seal. Non-wetted components: EPDM secondary seal, zinc plated steel spring, stainless steel external hardware, HDPE pressure adjustment screw. Infinite adjustment from 10-150 psi. (optional CPVC, PVDF)                      |
| <b>Calibration Cylinder (CC)</b>       | PVC body, PVC end caps, 1/2" PVC pipe outlet vent.<br>Available volumes: 3 GPH (100ml), 8 GPH (250ml), 16 GPH (500ml), 32 GPH (1000ml), 64 GPH (2000ml), and 132 GPH (4000mL).  |
| <b>Pulsation Dampener (PD)</b>         | CPVC body, 10 cubic inch volume (optional PVDF)   |
| <b>Gauge W/Guard (G)</b>               | Gauge: liquid filled stainless steel with blowout plug, bottom mount, 1/4" NPT threads. Available pressure ranges: 0-30 psi, 0-100, psi, 0-200 psi.<br>Guard: PVC body, temperature compensated oil filled. (optional CPVC, PVDF)                               |
| <b>Check Valve (CV)</b>                | PVC body. Cracking pressure: 1.0-1.5 psi<br>Maximum working pressure: inlet = 150 psi, back = 100 psi (optional CPVC, PVDF)   |
| <b>Flow Indicator (F)</b>              | Machined cast acrylic, PVC connections, ceramic ball, PVDF ball stop, PVC half unions.  |
| <b>Y Strainer (S)</b>                  | PVC body, 1/32" Mesh (optional CPVC, PVDF)  |
| <b>Pressure Switch (PSH)</b>           | 316 Stainless Steel   |
| <b>Back-Pressure Valve (BPV)</b>       | PVC body, 0-150 PSI Range (optional CPVC, PVDF)   |
| <b>Universal Mounting Blocks</b>       | PA 12   |
| <b>Pump Extended Mounting Brackets</b> | 316 Stainless Steel   |
| <b>Skid Mounting Foot Pads</b>         | 316 Stainless Steel   |
| <b>Mounting Hardware</b>               | 304 Stainless Steel - Wall or Floor mounting acceptable   |
| <b>Maximum Working Pressure</b>        | 150 psig (10.3 bar)   |
| <b>Operating Temperature</b>           | 14 °F to 115 °F (-10 °C to 46 °C)   |
| <b>Containment Volume</b>              | 2.2 gal (8.4L) - Integral to skid. 1/4" FNPT drain port.  |
| <b>Maximum Overall Dimensions</b>      | 30.0"W x 49.5"H x 35.0"D (76.2W x 125.73H x 88.9D cm)   |
| <b>Approximate Shipping Weight</b>     | Standard: 80 lb. (36 Kg) with mounted pump: 100-140 lb. (64 Kg)   |



Dimensions



| Dim | Inch   | cm     | Dim | Inch   | cm     |
|-----|--------|--------|-----|--------|--------|
| A   | 30.00" | 76.20  | E   | 49.50" | 125.73 |
| B   | 34.00" | 86.36  | F   | 32.15" | 81.65  |
| C   | 8.87"  | 22.54  | G   | 35.00" | 88.90  |
| D   | 45.37" | 115.24 |     |        |        |

# Model Number Matrix

CFPS-1-M

## CHEM-FEED® Simplex Skid System Matrix - Municipal

|  |                                   |          |                 |          |               |                        |                 |          |          |          |          |          |          |                    |                            |  |
|--|-----------------------------------|----------|-----------------|----------|---------------|------------------------|-----------------|----------|----------|----------|----------|----------|----------|--------------------|----------------------------|--|
| <b>CFPS-1</b>                            | Single pump system - PE structure |          |                 |          |               |                        |                 |          |          |          |          |          |          |                    |                            |  |
| <b>Inlet/Outlet</b>                      |                                   |          |                 |          |               |                        |                 |          |          |          |          |          |          |                    |                            |  |
| <b>A</b>                                 | Single Inlet / Single Outlet      |          |                 |          |               |                        |                 |          |          |          |          |          |          |                    |                            |  |
| <b>X</b>                                 | None, Skid Panel Only             |          |                 |          |               |                        |                 |          |          |          |          |          |          |                    |                            |  |
| <b>Piping/Unions</b>                     |                                   |          |                 |          |               |                        |                 |          |          |          |          |          |          |                    |                            |  |
| <b>A</b>                                 | PVC                               | <b>B</b> | CPVC            | <b>C</b> | PVDF          | <b>D</b>               | Chem Proline®   |          |          |          |          |          |          |                    |                            |  |
| <b>Seals</b>                             |                                   |          |                 |          |               |                        |                 |          |          |          |          |          |          |                    |                            |  |
| <b>V</b>                                 | FKM                               | <b>E</b> | EPDM            |          |               |                        |                 |          |          |          |          |          |          |                    |                            |  |
| <b>Tubing Connections</b>                |                                   |          |                 |          |               |                        |                 |          |          |          |          |          |          |                    |                            |  |
| <b>A</b>                                 | 1/2" ID<br>PVC Braided            | <b>B</b> | 1/2" ID<br>PTFE | <b>C</b> | 1/4" ID<br>PE | <b>D</b>               | 1/4" ID<br>PTFE |          |          |          |          |          |          |                    |                            |  |
| <b>Calibration Column</b>                |                                   |          |                 |          |               |                        |                 |          |          |          |          |          |          |                    |                            |  |
| <b>A</b>                                 | 128 GPH (4000 ml) PVC             |          |                 |          | <b>F</b>      | 3 GPH (100 ml) PVC     |                 |          |          |          |          |          |          |                    |                            |  |
| <b>B</b>                                 | 64 GPH (2000 ml) PVC              |          |                 |          | <b>P</b>      | 32 GPH (1000 ml) Glass |                 |          |          |          |          |          |          |                    |                            |  |
| <b>C</b>                                 | 32 GPH (1000 ml) PVC              |          |                 |          | <b>Q</b>      | 16 GPH (500 ml) Glass  |                 |          |          |          |          |          |          |                    |                            |  |
| <b>D</b>                                 | 16 GPH (500 ml) PVC               |          |                 |          | <b>R</b>      | 8 GPH (250 ml) Glass   |                 |          |          |          |          |          |          |                    |                            |  |
| <b>E</b>                                 | 8 GPH (250 ml) PVC                |          |                 |          | <b>S</b>      | 3 GPH (100 ml) Glass   |                 |          |          |          |          |          |          |                    |                            |  |
| <b>Pulsation Dampener</b>                |                                   |          |                 |          |               |                        |                 |          |          |          |          |          |          |                    |                            |  |
| <b>P</b>                                 | 10 cubic in                       |          |                 |          | <b>X</b>      | Not Included           |                 |          |          |          |          |          |          |                    |                            |  |
| <b>Back Pressure Valve</b>               |                                   |          |                 |          |               |                        |                 |          |          |          |          |          |          |                    |                            |  |
| <b>B</b>                                 | Included                          |          |                 |          | <b>X</b>      | Not Included           |                 |          |          |          |          |          |          |                    |                            |  |
| <b>Pressure Gauge w/Guard</b>            |                                   |          |                 |          |               |                        |                 |          |          |          |          |          |          |                    |                            |  |
| <b>A</b>                                 | 200 PSI                           |          |                 |          | <b>B</b>      | 100 PSI                |                 |          |          | <b>C</b> | 30 PSI   |          |          |                    |                            |  |
| <b>Pressure Switch w/Guard</b>           |                                   |          |                 |          |               |                        |                 |          |          |          |          |          |          |                    |                            |  |
| <b>S</b>                                 | Included                          |          |                 |          | <b>X</b>      | Not Included           |                 |          |          |          |          |          |          |                    |                            |  |
| <b>Flow Meter w/Strainer</b>             |                                   |          |                 |          |               |                        |                 |          |          |          |          |          |          |                    |                            |  |
| <b>A</b>                                 | 10-5000 ml/m                      |          |                 |          | <b>B</b>      | 100-10000 ml/m         |                 |          |          |          |          |          |          |                    |                            |  |
| <b>X</b>                                 | Not Included                      |          |                 |          |               |                        |                 |          |          |          |          |          |          |                    |                            |  |
| <b>Terminal Box</b>                      |                                   |          |                 |          |               |                        |                 |          |          |          |          |          |          |                    |                            |  |
| <b>T</b>                                 | Included                          |          |                 |          | <b>X</b>      | Not Included           |                 |          |          |          |          |          |          |                    |                            |  |
| <b>Pumps</b>                             |                                   |          |                 |          |               |                        |                 |          |          |          |          |          |          |                    |                            |  |
| <b>P</b>                                 | Mounted                           |          |                 |          | <b>X</b>      | Not Included           |                 |          |          |          |          |          |          |                    |                            |  |
| <b>Pump Model (purchased separately)</b> |                                   |          |                 |          |               |                        |                 |          |          |          |          |          |          |                    |                            |  |
| <b>-XX</b>                               | Specify Model used on Skid        |          |                 |          |               |                        |                 |          |          |          |          |          |          |                    |                            |  |
| <b>CFPS-1</b>                            | <b>M</b>                          | <b>A</b> | <b>A</b>        | <b>V</b> | <b>A</b>      | <b>A</b>               | <b>P</b>        | <b>B</b> | <b>A</b> | <b>S</b> | <b>A</b> | <b>T</b> | <b>P</b> | <b>-M3S24-MNGG</b> | <b>Sample Model Number</b> |  |

**NOTE:** When ordering pumps for skids, pump head orientation is standard LEFT facing only.

**NOTE:** When ordering pumps for skids, pump head orientation is standard LEFT facing only.